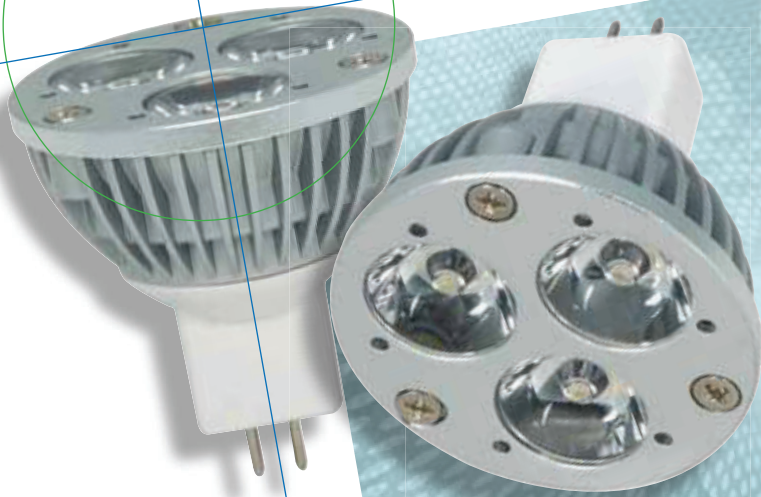


LED GU5.3 MR16 Lamp



SATCO "Accent" LED MR16 lamps are specially designed for applications where a controlled, lower light level in a narrow beam is required. These lamps are exceptionally good choices for built in display lighting, close up reading applications, curio cabinets etc.

Applications

- Display & showcase lighting



LED GU5.3 MR16 Lamp

Features and Benefits

- Long life - 50,000 hours
- Offered in 3000K & 5000K
- Attractive design - seamless integration
- No IR or UV - protects valuable objects
- Instant on at full brightness
- Mercury free - environmentally positive
- Very low maintenance costs
- Reduces cooling costs - generates very little heat



LED MR16 - GU5.3 Base

Specifications

Parameter	Unit	Specification	
Color Temperature	K	3000K	5000K
Beam Angle	deg.	18°	18°
Power Consumption	W	3.6	
Operating Voltage	V	AC12	
Luminous Flux	lm	115	170
Life Time	Hrs.	50000	
Dimensions	inch	Ø1.97" W x 1.75" H	
Base		GU5.3	
Color Rendering Index	Ra	75	
Item No.		S8781	S8782

Illumination

Throw Distance	3000K - 18°		5000K - 18°	
	Beam width	Luminance (lux)	Beam width	Luminance (lux)
3.5 Ft.	2.72 Ft.	495	2.72 Ft.	825
6.5 Ft.	3.94 Ft.	154	3.94 Ft.	245
9.8 Ft.	5.71 Ft.	69	5.71 Ft.	101

Item No.	Watt	Lumens	CCT	Beam	Volt	Life/ Hrs.	M.O.D.(Inches)	M.O.L.(Inches)	ES	CUFT.	Unit UPC	Case UPC
S8781	3.6	115	3000K	18°	12	50000	1.97	1.75	N	0.28	045923087813	10045923087810
S8782	3.6	170	5000K	18°	12	50000	1.97	1.75	N	0.28	045923087820	10045923087827

Pack Type: Box / Inner Pack 6 / Master Pack 24

