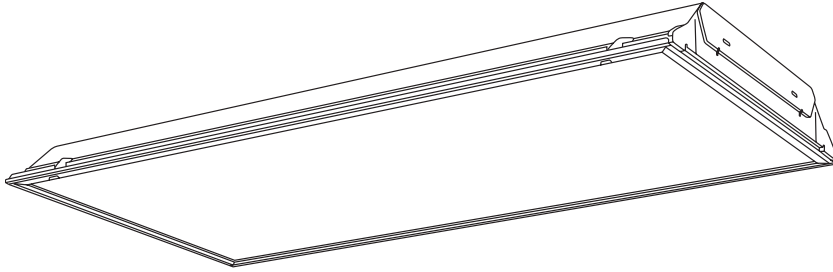


CATALOG NUMBER	TYPE

Versatile Troffer and Lens TY, TB, TC, TE, TK, TL, TN, TO, TP, TQ, TU, TW, TX, TZ

2' x 4', 4' x 4'



Housing: Die-formed heavy gauge steel with high-gloss baked white enamel finish (minimum reflectance 86%) over rust inhibiting phosphate coat. X prefix specifies durable high gloss powder coat post paint finish (90% reflectance) over rust inhibiting phosphate coat. Flush white steel door frame (TE standard with black) with mitered corners can be hinged from either side. Access plate providing two knockouts and grounding screw.

Shielding: A variety of acrylic lens and louvers available. Specular silver or gold finishes available.

Electrical: Fully wired for 120V, 60Hz AC operation, thermally protected, automatic resetting, Class P, sound rated A, high-power factor ballast, unless otherwise specified. Electronic T8 shall be instant start, <20% harmonic distortion standard, specify suffix UNV for <10% harmonic distortion. Specify suffix UNV for universal voltage, 120 through 277V, 50/60Hz AC operation, Electronic T8 only. UL and C-UL listed.

Mounting: Lay-in (T) or Flange (F) troffer. 2 x 4 flanged fixtures require field assembly.

Critical Application: SIMKAR strives to offer the most current product designs and value. Consequently, all SIMKAR products are subject to redesign and revision. Critical applications such as size, operating temperature, or sensor operation should be confirmed with the factory.

FEATURES AND BENEFITS

Versatile and efficient louver and lens options	➤ Ideal when quality and value are desired
Metal light trap standard	➤ Does not deteriorate like some gasketing
Swing action cam latches	➤ Easy access with no tools needed
Built-in T-bar clips	➤ Safely and securely hold fixture to T-bar
Upturned side rails and hemmed end plate	➤ For strength and safer handling
Lamp-pin slots	➤ Ease of lamp installation
Built-in door hinge	➤ Allows door to hinge or latch from either side

ORDERING INFORMATION

Example: TY244432B11FL4120V

MOUNTING	SPEC DOOR	SIZE	LAMPS	BALLAST	SPECIAL FEATURE	VOLTAGE
T - Lay-In	White steel, standard	244 - 2 x 4	232 - (2) 32W 48" T8	B11 - Electronic T8	20G - 20 gauge	120V
F - Flange	FW - Flat white aluminum	484 - 4 x 4†	240 - (2) 34 or 40W 48" T12	E1 - Energy Saving Magnetic T12	FL - Flex, see page 37	277V
XF - Powder coat, flange	RB - Regressed black		332 - (3) 32W 48" T8		HR - Heat removal, see page 36	UNV -120-277V
XT - Powder coat, lay-in	RW - Regressed white		340 - (3) 34 or 40W 48" T12		L - Lamps	
			432 - (4) 32W 48" T8		Reflectors, see page 36	
			440 - (4) 34 or 40W 48" T12		B - Black door	
			632 - (6) 32W 48" T8		G - Specular gold louver	
			640 - (6) 34 or 40W 48" T12		S - Specular silver louver	
			832 - (6) 32W 48" T8			
			840 - (8) 34 or 40W 48" T12			

LOUVER / LENS

B - .125 polycarbonate	N - Injection molded acrylic prismatic	U - .156 prismatic acrylic
C - .200 P15	O - .140 High impact	X - Parahex louver*
E - Shallow parabolic*†	P - Acrylic drop dish	Y - Standard A12 prismatic acrylic
K - .125 prismatic acrylic	Q - .125 RFI #12	Z - Customer specified
L - 1/2" x 1/2" x 3/8" egg crate, white		

* Specify silver or gold finish under Special Feature

† 78 cells (6 rows of 13)

‡ Available with white steel door frame only and (2) 2 x 4 louvers, except TY which is (1) 4 x 4 lens

For additional information, see chart on pages 39-41.

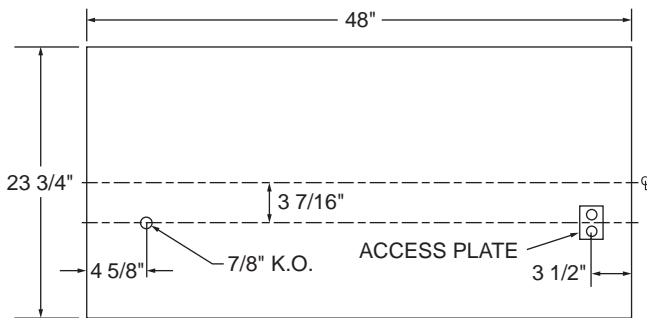
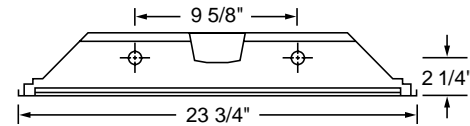
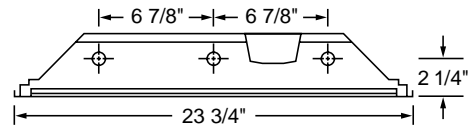
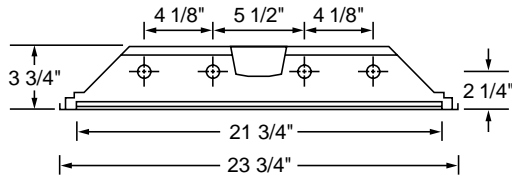
Versatile Troffer and Lens 2' x 4', 4' x 4'

PHOTOMETRIC DATA, TY 4-32W 2 x 4 Model

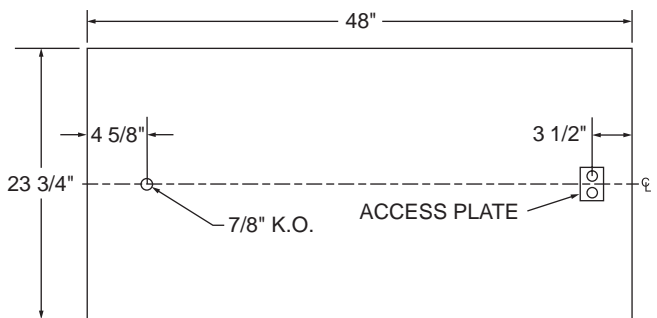
CANDLEPOWER				LIGHT GUIDE (T8 LAMPS AND ELECTRONIC BALLAST)				COEFFICIENT OF UTILIZATION												
Angle	0	45	90	Area/fixture in sq.ft./lg. room, good conditions - 8' to 10' ceilings				RC	80		70		50							
				2-"U" 6"		3-32W	4-32W	RW	70	50	30	70	50	30	50	30				
0	3970	3970	3970	Footcandles				RCR												
5	3955	3954	3966	35	86	149	202	1	91	87	84	89	85	83	82	80				
15	3801	3840	3888	50	60	105	141	2	84	78	73	82	76	72	74	70				
25	3463	3573	3675	75	40	70	94	3	77	70	64	76	69	63	66	62				
35	2914	3063	3249	100	30	52	71	4	71	63	56	70	62	56	60	54				
45	2139	2308	2450	AVERAGE LUMINANCE CD/SQ.M				LIGHT DISTRIBUTION				5	66	56	49	64	55	49	54	48
55	1388	1471	1579	Angle	0	45	90	Zone	Lumens	%Lamp	%Fixture	6	61	51	44	59	50	43	49	43
65	814	675	863	45	4738	5112	5426	0-30	3107	26.8	32.6	7	56	46	39	55	45	39	44	38
75	512	386	516	55	3790	4017	4311	0-40	5024	43.3	52.6	8	52	41	34	51	41	34	49	34
85	192	176	194	65	3017	2501	3198	0-60	8118	70.0	85.1	9	48	37	30	47	37	30	36	30
90	25	26	33	75	3098	2336	3122	0-90	9544	82.3	100.0	10	44	34	27	43	33	27	33	27
				85	3450	3163	3486													

Lamps = (4) F32 T8 @ 2850 lumens ea. Input Watts = 144.5 LER = 57.1 Test #00793 Ballast = Electronic Ballast Factor = .88 S/MH: 0° = 1.2; 90° = 1.3
Comparative yearly lighting energy cost per 1000 lumens = \$4.20 based on 3000 hrs. and \$.08 per KWH

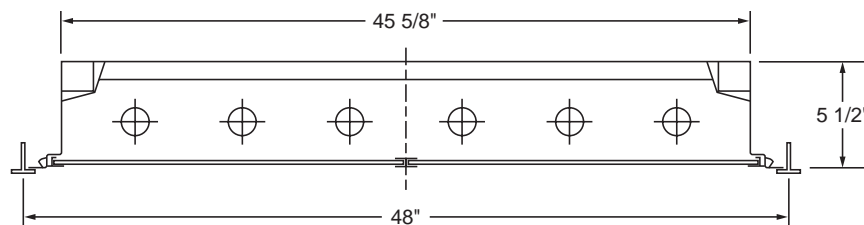
DRAWINGS AND DIMENSIONS



3 Lamp 2 x 4 Model



2 or 4 Lamp 2 x 4 Model



4 x 4 Model