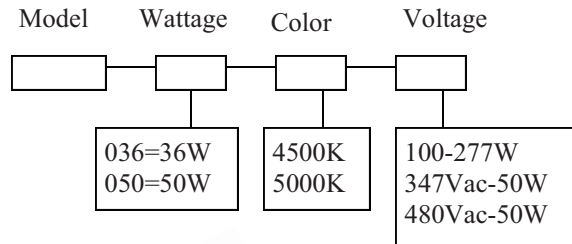
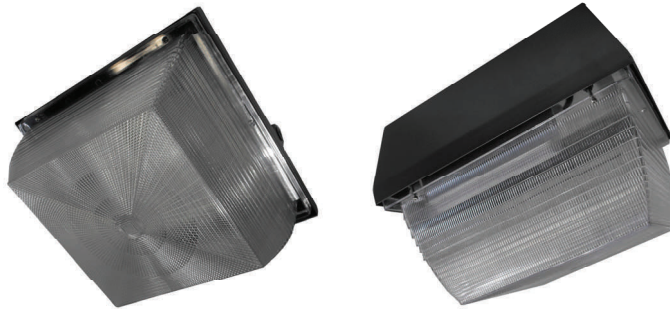


WCP012

Project Name:	Location:	Date:	Qty:
Fixture Type:	Prepared by:	Comments:	

The WCP012-0504277 36W or 50W LED High Power 12" x 12" Canopy Light. It is a new, energy-saving product that utilizes high power LEDs as a light source. It produces no ultraviolet light, no infrared rays, no heat, and no radiation. As a result, our LED High Power Canopy Light series are a conventional "green" lighting source.

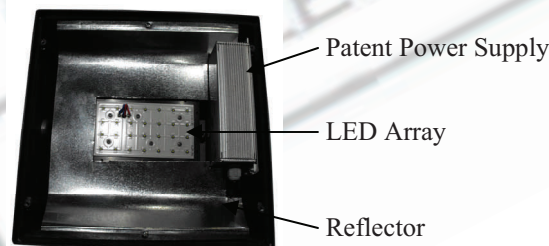


LED Source: 36 LEDs @1.1w or 50W Array
 Power Consumption: 39W or 56W
 Voltage: AC (100 to 277V)
 LED Luminous Flux: 3,500lm, 4960lm
 LED Luminous Efficiency: >114lm @36W,100lm @50W
 Special Features: Integrated LED 12" x 12" Canopy light, IP65.
 LED Maintain Flux: 4,960lm (Tj=60c,Ta=30c)
 Lamp's Efficiency (%):>95%
 THD <20%
 IP 65

Color Temperature (CCT): White: 4500K-5000K
 CRI:Ra > 80
 Working Temperature: -30c to 50c
 Working Humidity: 10%~90%RH
 Rated 75,000 @ 80c
 30% LED depreciations: >50,000Hrs
 Light Body & Lampshade Material: Aluminum Alloy and PC
 Dimensions: 12.5"(L) x 12.5"(W) x 9"(H)
 Net Weight: 6.12 Kgs or 13.5lbs

The lamp casing is made of Aluminum-Alloy through die-casting that is covered with a fluorocarbon powder that is sprayed with an electrostatic spray. The LED High Power 12" x 12" Canopy Light lamp lens is made of material that use high quality transparent polycarbonate, is highly lucent, dust-proof, and waterproof. The whole LED High Power Canopy Light uses Aluminum for fasteners, the product is safe, reliable, and has low energy-consumption and 30% LED depreciation > 50,000 hours. The LED High Power Canopy Light, is especially suitable to use in public places such as open squares, Tunnels, Factories, Workplaces, and Factories, Warehouses, Garages and just about any location a low hanging light source id required. As a professional LED Factory, Manufacturer, and Supplier, most of our LED Light products have a CE, RoHS, Met, and CSA Certificates UL,CUL Pending. This LED High Power Canopy Light, can be directly connected to 100 to 277VAC line voltage. About the LED color spectrum, there is no ultraviolet light, no infrared rays, no heat, and no radiation produced. As a result, our LED High Power Canopy Light series are a conventional "green" lighting source.

36W in Photo



3 Year Labor and Part Warranty against manufacturer defect is provided to use under normal operating conditions. Proof of purchase must be provided when warranty service is requested. Notice that improper use or unauthorized repair will not be covered by the warranty. S3J Electronics reserves the right to make changes to this document and to the product without notice.

It will occasionally be necessary to clean outside of refractor to maintain light levels. Frequency of cleaning will depend on ambient dirt level and minimum light levels acceptable to user. The refractor should be washed in a solution of warm water and any mild, non-abrasive household detergent. Wipe with soft cloth or brush. Rinse in cool, clear water. Should the optical assembly become dirty on inside, clean in above manner, and replace any damaged gasket. Use of abrasive cleaners will shorten the life of refractor.